

BISMON UTP OUTDOOR CABLE CATEGORY 6+ (600 Mhz)

BISMON Category6 4 Pair UTP OUTDOOR Cable Double Jacket 23AWG (0.57mm) solid bare copper, Cable provides significant headroom above all TIA/EIA and ISO/IEC category 6/class E transmission performance specifications. combine our high performance category 6 connectivity with Category 6 cable and use for backbone ethernet lan gigabit network. It is designed for use in horizontal cabling situations and supplied in 305m (1,000ft) easy pull out reels. These category 6 systems exceed ANSI/TIA/EIA-568-B.2-1 Category 6 performance requirements, providing usable bandwidth well beyond 600 Mhz.



Applications

- 4Mbps Token Ring (IEEE 802.5)
- 10Mbps 10Base-T Ethernet (IEEE 802.3u)
- 16Mbps Token Ring (IEEE 802.5)
- 100Mbps Fast Ethernet (IEEE 802.3u, ANSI X3T9.5 TPDDI)
- 100 VG ANYLAN (IEEE 802.12)
- 155 Mbps ATM
- 622Mbps ATM
- 1000Mbps 1000Base-T Gigabit Ethernet (IEEE 802.3)
- Broadband Video and voice, ISDN
- Voice over internet Protocol (VoIP)
- Power over Ethernet (PoE) - IEEE 802.3af, IEEE 802.3at
- Use Full high speed for IP Camera

Features

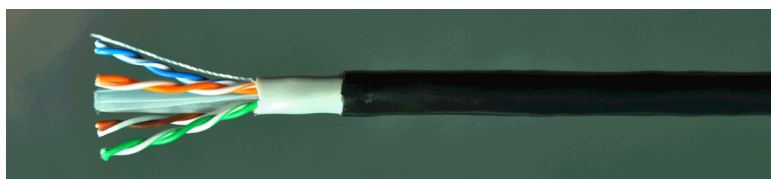
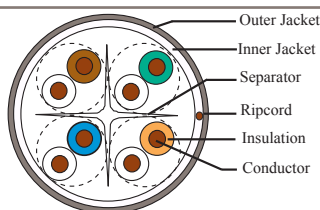
- Complies with Category 6 cables exceed standards : ISO/IEC 11801 Class E, ANSI/TIA/EIA 568-B.2-1
- Supports transmission of digital and analogue voice, data and video signal.

Benefits

- Provides cost effective solution
- Provides remaining length of cable on reel
- Performance assurance for multiple high-bandwidth applications (e.g., Fast Ethernet, ATM, Gigabit Ethernet)
- Reduces tension on wire to ensure proper electrical performance after installation
- Easily identifiable conductor mates
- Eliminates guess work of footage in box or reel
- Offers flexibility in selection of connectivity solutions
- Easily identifiable jacket colors

Standards Compliance

- 3P Third Party Testing 2nd:2002 Verified, ETL, TIA/EIA-568A/B.2 Category 6, ISO/IEC-11801 2002 (Edition 2) Class E, CENELEC EN50173: 2002 (Edition 2), EN50288-3-1, UL & cUL, IEC61156-5(2002), IEC 60332-1 and IEEE 802.3, NEMA WC63.1, UL and cUL (CMR) E354119



Packaging:

Fire Classification :

PVC : IEC 60332-1, UL CM, CMR

LSZH : IEC 61034, IEC 60754, IEC 60332-1

Colour identification according to IEC 60304.

Pair 1 White-Blue/Blue

Pair 2 White-Orange/Orange

Pair 3 White-Green/Green

Pair 4 White-Brown/Brown



SPECIFICATION OUTDOOR CATEGORY 6 (600 Mhz)

PHYSICAL SPECIFICATIONS

UTP Cable	: 4 PAIR UTP CAT6 (600MHZ)
Gauge	: 23 AWG (Solid bare copper)
Conductor Dia. Nom.	: 0.57 mm
Insulation Material	: HDPE
Filler slot	: FR-PE Isolator Separator
Insulation Dia.	: 1.02 mm
Conductor	: Solid Bare Copper
Twisting Pair Lay Length	: < 38mm
Labeling Lay Length	: < 120mm
Inner Jacket	: FR-PVC, Nor OD:6.2mm
Outer Jacket	: UV-PE (Polyethylene)
Sheath Thickness	: 0.55mm
Outer Diameter	: 7.3 mm
Tensile strength Max. load	: 250N
Bending Min. install	: 4x dia.
Operating Temperature Range:	-20 °C ~ 60 °C
Storage Temperature Range	: -20 °C ~ 80 °C

ELECTRICAL SPECIFICATIONS

Conductor resistance	: < 8.2 ohm/100m
Insulation resistance	: > 5000M-OhmKm (DC500V Charged 1 Min)
Voltage endurance	: DC 1500V/min
Mutual capacitance	: 5.6nF/100m
DC Resistance @ 20 °C	: 66.5 ohm/Km., max
DC resistance unbalance	: 5.0%
Characteristic impedance (1-250MHz)	: 100 ohm+- 15 ohm
Delay Skew Propagation	: 45ns/100m
Delay Rating	: 536ns/100m.@ 250MHz
Temp Voltage	: 75 °C, 300 volts
Nominal Velocity of Propagation (NVP)	: CMR- 70%, CMP-72%

Electrical Data at 20 °C

Frequency	Attenuation (dB/100M)	NEXT (dB)	ACR (dB)	Return Loss (dB)	PS NEXT (dB)	PS ACR (dB)	ELFLEXT (dB)	PS.ELFLEXT (dB)
1.0 MHz	2.0	77.5	75.5	20.0	75.5	73.5	68.5	65.5
4.0MHz	3.8	68.5	64.7	23.0	66.5	62.7	56.5	53.5
8.0 MHz	5.3	64.5	59.2	24.5	62.5	57.1	50.5	47.5
10.0 MHz	6.0	62.5	56.5	25.0	60.5	54.4	48.5	45.5
16.0 MHz	7.6	59.6	51.9	25.0	57.6	49.9	44.5	41.5
20.0 MHz	8.5	58.5	50.1	25.0	56.5	48.0	42.5	39.5
25.0 MHz	9.5	56.5	47.0	24.3	54.5	44.9	40.6	37.5
31.25 MHz	10.7	55.5	44.8	23.6	53.6	42.9	38.4	35.5
62.5 MHz	15.4	50.5	35.1	21.5	48.5	33.1	32.5	29.5
100 MHz	19.8	47.5	27.7	20.1	45.5	25.6	28.5	25.5
155 MHz	25.3	44.5	19.2	18.8	42.5	17.2	24.5	17.5
200.0 MHz	29.0	43.5	14.5	18.0	41.5	12.3	22.5	21.6
250.0 MHz	32.8	41.6	8.7	17.4	39.5	6.5	20.5	17.6
300.0 MHz	36.6	40.5	3.9	16.8	38.5	1.9	18.4	15.6
350.0 MHz	40.0	39.5	-	16.3	37.5	-	17.5	14.4
400.0 MHz	43.0	38.5	-	15.9	36.5	-	16.5	13.5
450.0 MHz	46.3	38.5	-	15.6	36.5	-	15.5	12.5
500.0 MHz	48.9	37.5	-	15.3	35.6	-	14.5	11.5
550.0 MHz	52.0	36.5	-	14.9	34.5	-	13.5	10.5
600.0 MHz	54.7	36.5	-	14.7	34.5	-	12.5	9.5

Order Information

Part No.	Descriptions	Variant	Jacket Color	Delivery Length
BMU6305-OUT	UTP Outdoor Cable Category 6	PVC, PE	Black	Box 305M(1,000ft)/ Reel